

Health Independence Programs

'A better client journey'

The PAC, SACS and HARP programs encompass many of the services that deliver health care to support the transition from hospital to the home. These services can also prevent the need for a hospital presentation or stay, with many people accessing these services directly from the community.

The Health Independence Programs work collaboratively together to ensure your care is coordinated efficiently. At any point of access to the 3 programs, staff are able to identify whether there are any other services that may compliment your care and provide the best possible experience throughout your journey.



Alignment of Health Independence Programs

The alignment of PACS, SACS and HARP is underpinned by 7 key objectives:

- To simplify the service system
- To produce efficiencies in service delivery
- To minimize duplication
- To improve equity
- To enhance coordination
- To reduce fragmentation of service delivery across funding streams
- To enhance flexibility in service delivery

Key principles for aligning PAC, SACS & HARP

- Defined points of access to link a client into the range of services that a client needs
- Common assessment practices, including sharing assessment and care planning information across the different programs
- Common referrals to facilitate transition between programs
- Coordination of services between programs
- Guidelines for programs that are consistent

SUMMARY OF SERVICES

Post Acute Care PAC

Is the management and provision of short term care for patients with complex needs during their recovery from an episode of acute illness or injury. PAC provides additional services for up to 4 weeks. Types of services available are; Home Care, Personal Care and Respite Care.

Sub-acute ambulatory care services SACS - Community rehabilitation Centre CRC

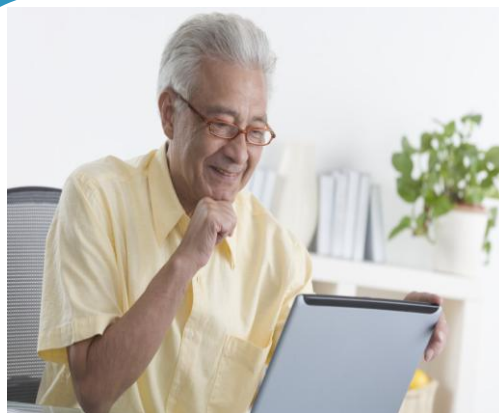
The aim of SACS are to help people who have a physical disability, are frail, chronically ill or recovering from traumatic injury to regain optimal function, and to allow people to maximise their independence and return to or remain in their own home. Community rehabilitation services are time-limited and goal orientated.

Hospital Admission Risk Program HARP

HARP Services manage people with chronic diseases who frequently use hospitals or are at risk of hospitalisation. The program coordinates health services to help people better manage their own health.

'The right care in the right place'

Ensuring a person receives the appropriate health care, at the right time and in the right place may reduce the need for a hospital admission.



**Health Independence Program
Contact details**

CRC Phone 5033 9321
 Fax 5033 9320

HARP Phone 5036 4565
 Fax 5033 9369

PAC Phone 5033 9381
 Fax 5032 1822

Health Independence Programs

Post Acute Care (PAC)

**Hospital Admission
Risk Program (HARP)**

**Sub-acute Ambulatory
Care Services (SACS)**



**Swan Hill
District Health**
my hospital



**Swan Hill
District Health**
my hospital