

Swan Hill District Health

Uniform Policy Booklet

For More Information:
Contact Human Resources

Steven Wainwright:

5033 9315

Kristy Shadbolt

5033 9499



Swan Hill District Health, in line with the “VALUES” has developed a Uniform to take us forward with pride.

Patients, residents, visitors and fellow employees will find it easy to identify staff from the different areas of service.

The “LOOK” of the Health Service is both professional and efficient and will promote pride internally and externally.

Swan Hill District Health
P.O. Box 483
Swan Hill, 3585
p-(03) 50339300

Publication Date: December 2018



Swan Hill District Health Uniform Policy

SHDH has a Corporate Uniform. It gives the organisation a professional public image and enable staff to receive the full tax benefits of a corporate uniform.

Uniform Allowance

When staff are required to wear a uniform, they will be paid a uniform allowance as per their Award or Certified Agreement via the payroll system. Where the allowance is paid there is an expectation that a uniform will be worn. If your Award/Agreement does not provide a Uniform Allowance, you should contact HR. Only the approved Uniform will be authorised for embroidery of the SHDH logo. Without the logo, it is not a Uniform.

Corporate Uniform

The choice of Uniform is limited to the Register of Approved Occupational Clothing. This registration describes the Departments applicable for a uniform and the options available. A copy is available through the Human Resources Department. The Corporate Uniform style must be registered for a minimum of three years.

Tax Deduction.

The cost of a Corporate Uniform is an Australian Taxation Office tax deduction as a work related expense. The registration code for gaining the tax advantage is CW 10690.

SHDH Logo

All corporate clothing must display the SHDH Logo in the place indicated by the registration. Nurses will also have their occupation stated beneath the logo i.e.: Registered Nurse, Enrolled Nurse, Care Co-ordinator or PCA.

For Allied Health Professionals the titles will be: Physiotherapist, Occupational Therapist, Podiatrist, Dietician, Exercise Physiologist, Allied Health Assistant, and Speech Pathologist.



Contents

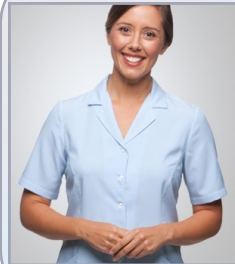
Pages 4-5	Nursing and Clinical Staff Blue
Pages 6-7	Administration Staff Silver / Light Grey Engineering Staff Navy Blue
Pages 8-9	Environmental Services Staff Navy Blue Activities Co-ordinator, Leisure Lifestyle Staff Jade Volunteers Purple
Pages 10-11	Allied Health Professionals Black and White Primary Health Medical Centre Lilac Primary Health Medical Nursing Blue
Pages 12	Executive Staff White and Grey
Page 13	Information

Disclaimer: Images are representations only and may not accurately reflect true colours. Images are an indication of styles only.

NURSING & CLINICAL STAFF ROYAL / OCEAN BLUE



**CITY
COLLECTION
EZYLIN
OCEAN
2145**
LADIES 3/4 SLEEVE,
2146 SS SHORT
SLEEVE



**CITY
COLLECTION
EZYLIN
STRIPE 2270**
LADIES SHORT
SLEEVE, PLAIN
BLUE 2149



**POLO
JB'S WEAR
ROYAL POLO
7LPI LADIES**

The SHDH logo along with occupation will be displayed on Nursing Staff Uniform.



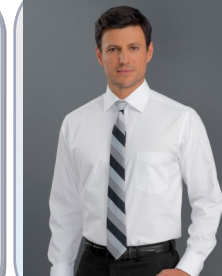
Registered Nurse

All Nursing Staff wearing shirts or polo's are to wear with Black or Navy Pants, Shorts or Skirts.

EXECUTIVE OFFICERS & DEPARTMENT HEADS GREY & WHITE



**JOHN KEVIN
GUN METAL
462**
MENS LONG
SLEEVE, 463
SHORT SLEEVE



**JOHN KEVIN
MENS LONG
SLEEVE WHITE
400**
401 SHORT
SLEEVE

BLACK DRESS

Black dresses can be worn by staff if their manager has deemed it appropriate for their departments



**BLACK /
CHARCOAL
SHORT
SLEEVE
DRESS**



The SHDH logo only, will be displayed on Executive & Medical Services Staff Uniforms.

EXECUTIVE OFFICERS & DEPARTMENT HEADS

GREY & WHITE



**CITY
COLLECTION
PIPPA WITE
2222**
LADIES (DRAPED
NECKLINE)
SHORT & 3/4
SLEEVE



**CITY
COLLECTION
EVA "THE
CLEVER
COWL" 2226**
3/4 SLEEVE



**JOHN KEVIN
STEEL STRIPE
366**
3/4 SLEEVE



**JOHN KEVIN
GUN METAL
362**
LADIES 3/4
SLEEVE
363 SHORT
SLEEVE



**CITY
COLLECTION
EZYLIN 2415
BLOCK WHITE**
3/4 SLEEVE,
2146 SHORT
SLEEVE

All shirts are to be worn with Charcoal or Black Pants, Shorts or Skirts.

NURSING & CLINICAL STAFF ROYAL / OCEAN BLUE



POLO
JB'S WEAR
ROYAL POLO
7PIP MENS



**CITY
COLLECTION
MENS 4145 SS**
BLOCK COLOUR
SHORT SLEEVE,

SCRUBS

Theatre Nurses are not required to wear Uniforms to and from Theatre. They are, however required to wear a Uniform if they are rostered to a shift outside theatre (eg. DPU, Acute, ECU etc).



**MOBB
ROYAL BLUE
310T V-NECK**
UNISEX SCRUB TOP

Royal Blue or Navy Blue Scrub Pants are to be worn with Scrub Tops

ADMINISTRATION STAFF

SILVER / LIGHT GREY



**BIZ
COLLECTION
TREND
SILVER
S622LT**
LADIES 3/4
SLEEVE SHIRT



**BIZ
COLLECTION
MADISON
SILVER
S626LL**
LADIES LONG
SLEEVE SHIRT



**CITY
COLLECTION
SMART KNIT
SILVER 2291**
LADIES SHORT
SLEEVE, 3/4 (2290),
SLEEVELESS
(2292)



**CITY
COLLECTION
SO EZY
SILVER 2263**
LADIES 3/4
SLEEVE TOP



**NEAT & TRIM
HAND DRAWN
PRINT
CATU5X BLW**
LADIES
PEPLUM TOP



**NEAT & TRIM
HAND DRAWN
PRINT
CAT9XF BLW**
LADIES
CAPPED
SLEEVE TOP

All administration shirts are to be worn with black or charcoal pants, shorts or skirts.

PRIMARY HEALTH MEDICAL CENTRE - LILAC



**CITY
COLLECTION
EZYLN 2146
LILAC SHIRT
SLEEVE**
(2145) 3/4
SLEEVE



**CITY
COLLECTION
PIPPA KNIT
LILAC 2222**
(2221) 3/4
SLEEVE



**NNT
SHORT
SLEEVE POLO
CATJ2M**
MENS, LADIES
CATU58



**BLACK /
CHARCOAL
SHORT
SLEEVE
DRESS**

PRIMARY HEALTH MEDICAL NURSING - BLUE



**MOBB
ROYAL
BLUE
310T V-
NECK**
UNISEX SCRUB



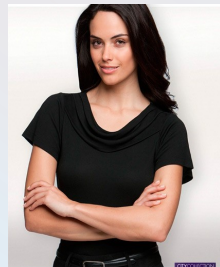
The SHDH logo only, will be displayed on Executive & Medical Services Staff Uniforms.

ALLIED HEALTH PROFESSIONALS & RADIOLOGY

Black and White



**CITY COLLECTION
PIPPA 2222**
LADIES DRAPED
NECKLINE SHORT &
3/4 SLEEVE



**CITY
COLLECTION
EVA "THE
CLEVER
COWL" 2227**
SHORT SLEEVE,
2226 3/4 SLEEVE



**NNT
BLACK ZIP
FRONT TUNIC
CATU68**
LADIES



**POLO'S
JB'S WEAR
BLACK/WHITE
7LPBW LADIES
P9900 MENS**



**JOHN KEVIN
MENS BLACK**
206 LONG SLEEVE
207 SHORT
SLEEVE

LADIES WHITE
106 3/4 SLEEVE
107 SHORT
SLEEVE



**JOHN KEVIN
MENS WHITE**
206 LONG SLEEVE
207 SHORT
SLEEVE

LADIES BLACK
106 3/4 SLEEVE
107 SHORT
SLEEVE

The SHDH logo along with occupation will be displayed on Allied Health Staff Uniform with the exception of Health Promotion Staff who will have the logo only. e.g. →



Physiotherapist



The SHDH logo only will be displayed on Administration & Engineering Staff Uniforms.



**BIZ
COLLECTION
MADISON
SILVER
S628LS**
LADIES SHORT
SLEEVE OR
SLEEVELESS TOP



**BLACK /
CHARCOAL
SHORT
SLEEVE
DRESS**



**BIZ COLLECTION
TREND
SILVER
S622MS**
MENS SHORT
SLEEVE
S622ML
LONG SLEEVE
SHIRT



**BIZ
COLLECTION
RESORT POLO
GREY P9900**
MENS POLO
P9925 LADIES
POLO

ENGINEERING SERVICES



**HARD YAKKA
LEGENDS
NAVY 07902**
MENS COTTON
DUCK WEAVE
SHORT & LONG
SLEEVE SHIRT
(07901)



**JB'S WEAR
NAVY 7PIPW**
MENS POLO

Engineering shirts are to be worn with black or navy blue pants or shorts.

ENVIRONMENTAL SERVICES FEMALE - NAVY



**JB'S WEAR
POLO
LADIES**



**CITY
COLLECTION
PIPPA NAVY
2222**
LADIES (DRAPED
NECKLINE) SHORT &
3/4 SLEEVE



**BIZ
COLLECTION
OASIS NAVY
LB3600**
LADIES BLOCK
COLOUR SHORT &
3/4 SLEEVE SHIRT

MALE - NAVY



**BIZ
COLLECTION
METRO NAVY
SH715**
MENS SHORT &
LONG SLEEVE
SHIRT (SH714)



**JB'S WEAR
NAVY
MENS POLO**

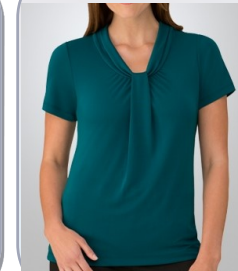


The SHDH logo only will be displayed
on Environmental, Activities &
Volunteer Uniforms.

ACTIVITIES CO-ORDINATOR, LIFESTYLES & LEISURE JADE



**NNT
POLO'S
CATU58**
LADIES
CATJ2M MENS



**CITY
COLLECTION
PIPPA JADE
2222**
LADIES (DRAPED
NECKLINE) SHORT &
3/4 SLEEVE



**BIZ
COLLECTION
MONARCO
TEAL S770MS**
MENS SHORT
SLEEVE SHIRT

VOLUNTEERS - PURPLE



**JB WEAR
COLOURED
TRICOT VEST
6HFV
PURPLE**



**JB WEAR
SMOCK 5PF
PURPLE**

All shirts are to be worn with Navy or black Pants, Shorts or
Skirts.